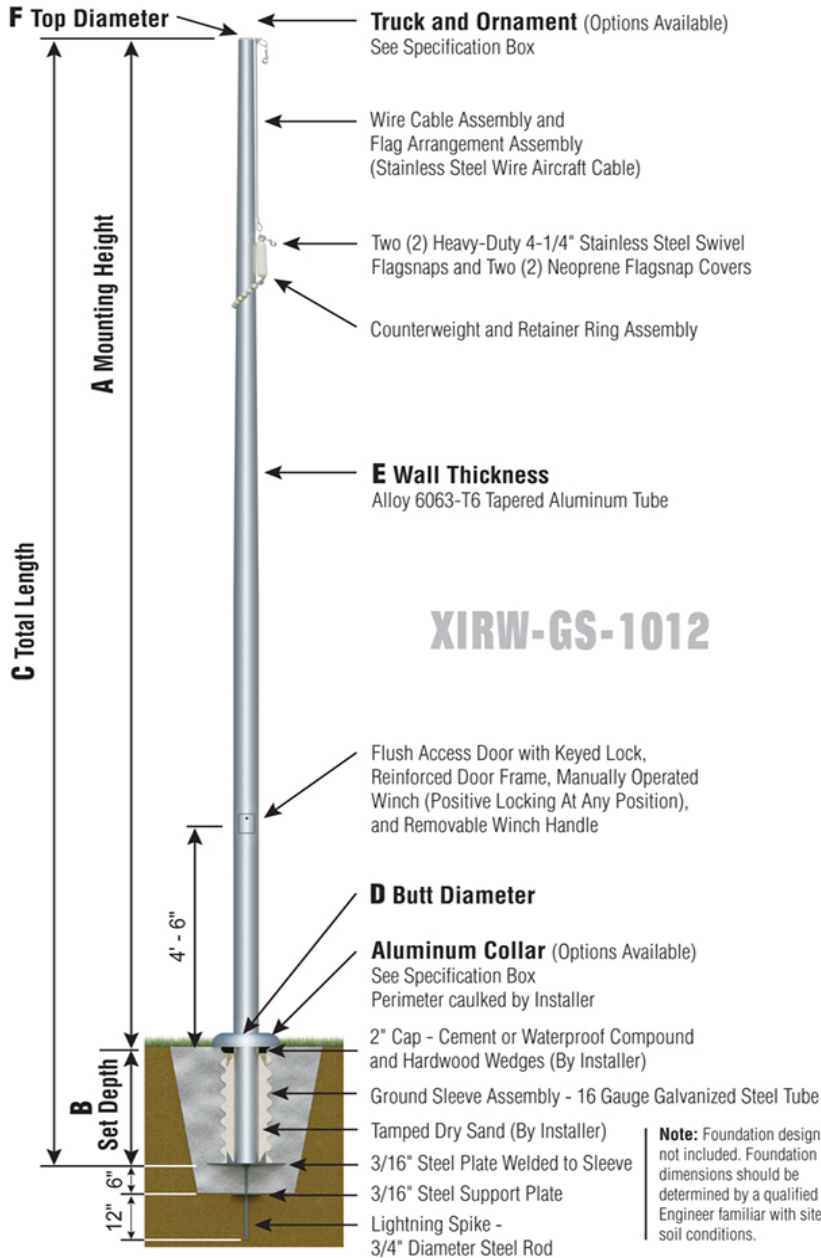




Xtreme Series

XIRW - Xtreme Reinforced Int. w/ Winch
Wire Halyard
Ground Set Installation



XIRW-GS-1012

XIRW60H23 - SAT



TRK-9800SS-58
Int. Rev. Sealed
Truck
SS Spindle



BAL-1258-GLD
HD Gold Anodized
Aluminum Ball



COL1-A12C
FC-11 Cast Alum
1-Piece



SAT
Satin Finish



XIRW - WINCH
Flush Mount
Hinged Door

Specifications	
A. Mounting Height:	60'
B. Set Depth:	6'-0"
C. Total Length:	66'-0"
D. Butt Diameter:	12"
E. Wall Thickness:	.375"
F. Top Diameter:	4"
Flagpole Sections:	3
Shaft Weight:	880 lbs.
Hardware Weight:	67 lbs.
Ground Sleeve Weight:	90 lbs.
* Max Flag Size:	12' x 18'
* Max Wind Speed w/Nylon Flag:	171 mph
* Max Wind Speed No Flag:	228 mph
* Wind Speed Specifications from ANSI/NAAMM FP 1001-07	

Customer Name:	
Dealer:	Qty: 1
Project:	Location:
Notes:	

XIRW60H23G-TAE-O0G-C2P-FSA