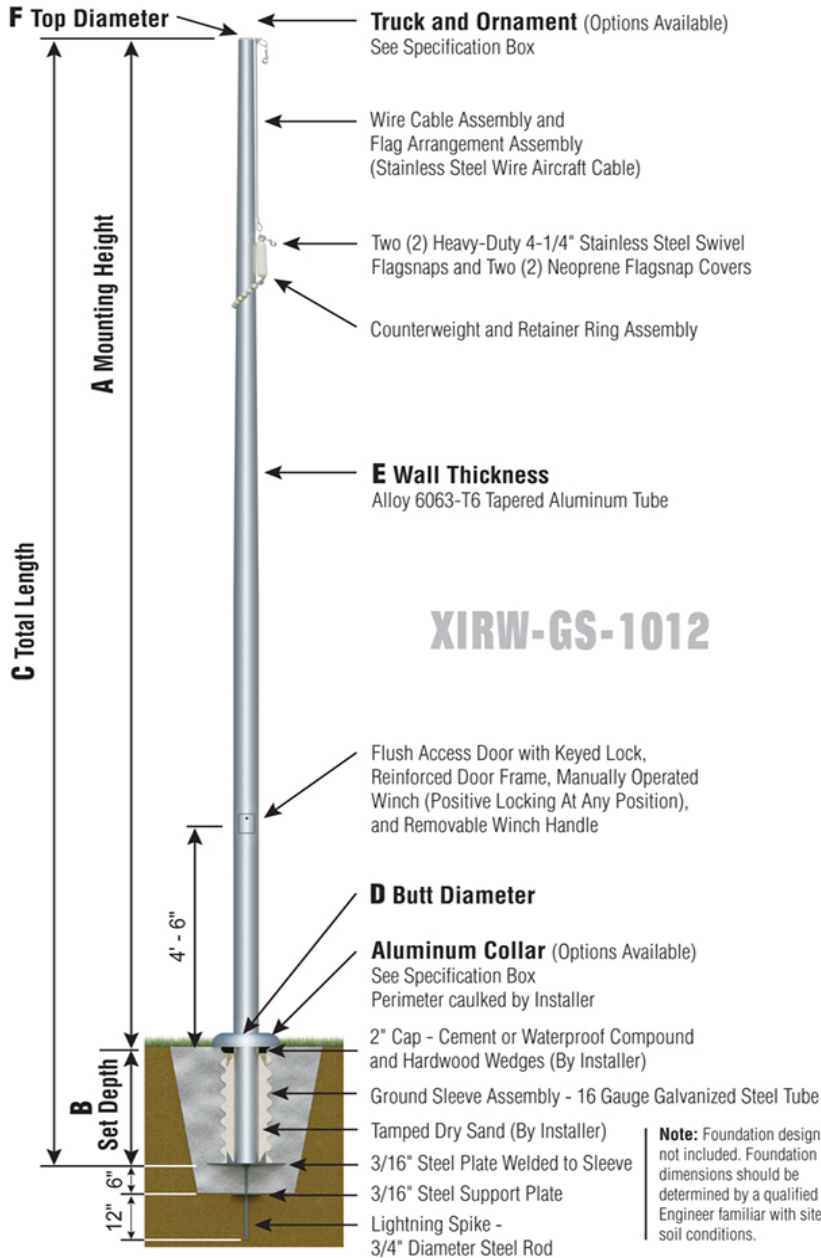




Xtreme Series

XIRW - Xtreme Reinforced Int. w/ Winch
Wire Halyard
Ground Set Installation



XIRW-GS-1012

Note: Foundation design not included. Foundation dimensions should be determined by a qualified Engineer familiar with site soil conditions.

XIRW50F13 - SAT



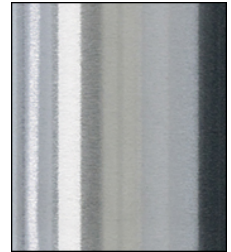
TRK-9800SS-58
Int. Rev. Sealed
Truck
SS Spindle



BAL-1058-GLD
HD Gold Anodized
Aluminum Ball



COL1-A10C
FC-11 Cast Alum
1-Piece



SAT
Satin Finish



XIRW - WINCH
Flush Mount
Hinged Door

Specifications	
A. Mounting Height:	50'
B. Set Depth:	5'-0"
C. Total Length:	55'-0"
D. Butt Diameter:	10"
E. Wall Thickness:	.250"
F. Top Diameter:	4"
Flagpole Sections:	3
Shaft Weight:	440 lbs.
Hardware Weight:	63 lbs.
Ground Sleeve Weight:	83 lbs.
* Max Flag Size:	10' x 15'
* Max Wind Speed w/Nylon Flag:	140 mph
* Max Wind Speed No Flag:	191 mph
* Wind Speed Specifications from ANSI/NAAMM FP 1001-07	

Customer Name:	
Dealer:	Qty: 1
Project:	Location:
Notes:	

XIRW50F13G-TAE-O0F-C2D-FSA