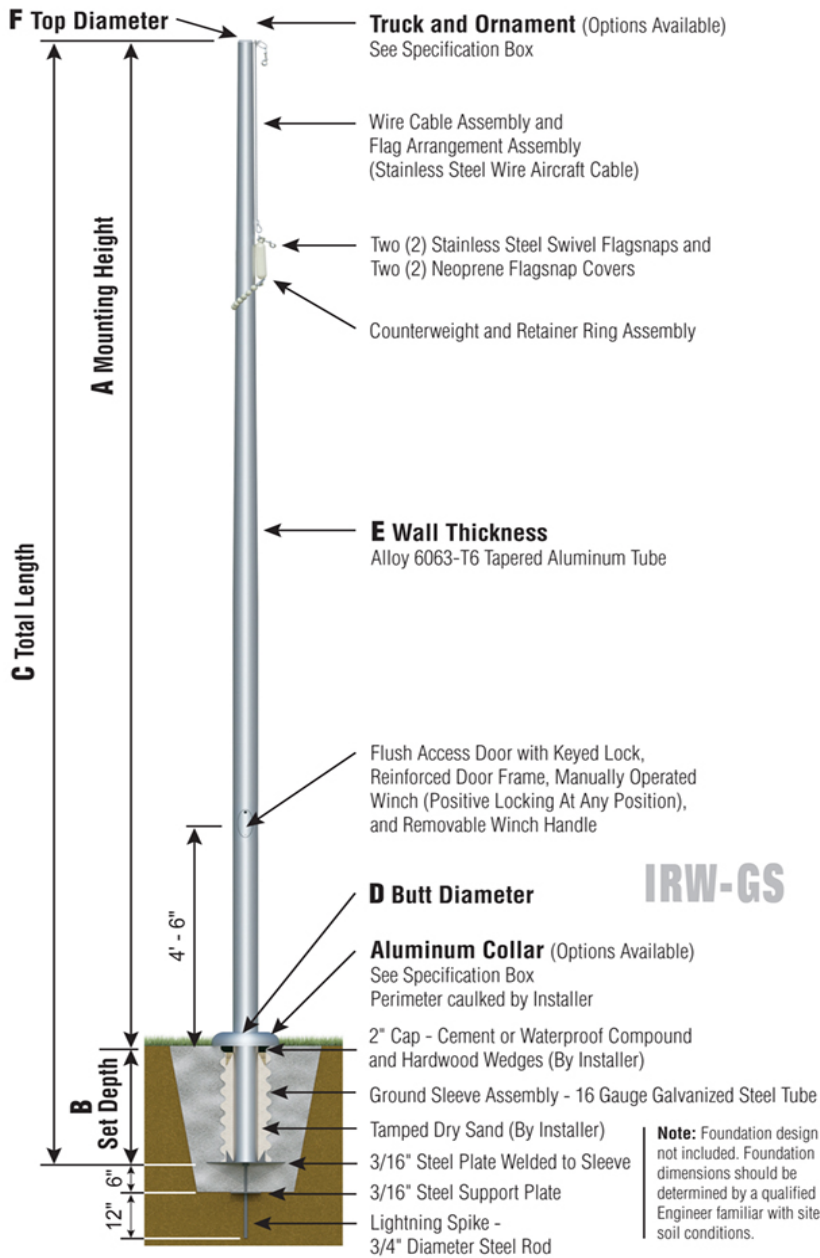




## Independence Series

IRW - Internal with Winch  
Wire Halyard  
Ground Set Installation



NOMINAL EXPOSED HEIGHT: Total Shaft Length of 25' flagpoles is 26'-6" with a Set Depth of 2'-6". With the Truck and Ornament attached, the nominal Mounting Height is 25'.

Customer Name:	
Dealer:	Qty: 1
Project:	Location:
Notes:	

IRW25C61G-T0Y-O2N-C0W-FSA

**IRW25C61**

**- SAT**



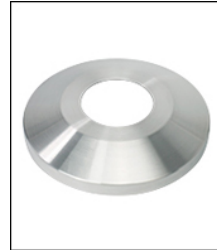
**TRK-9660**

Int. Revolving Truck  
Sealed Bearings



**BAL-0612-GLD-ES**

HD Gold Anodized  
Aluminum Ball



**COL1-A06S**

FC-11 Spun Alum  
1-Piece



**SAT**

Satin Finish



**IRW - WINCH**

Reinforced Welded  
Door Frame

### Specifications

A. Mounting Height: 24'
B. Set Depth: 2'-6"
C. Total Length: 26'-6"
D. Butt Diameter: 6"
E. Wall Thickness: .156"
F. Top Diameter: 3.5"
Flagpole Sections: 1
Shaft Weight: 123 lbs.
Hardware Weight: 20 lbs.
Ground Sleeve Weight: 32 lbs.
* Max Flag Size: 5' x 8'
* Max Wind Speed w/Nylon Flag: 149 mph
* Max Wind Speed No Flag: 230 mph
* Wind Speed Specifications from ANSI/NAAMM FP 1001-07