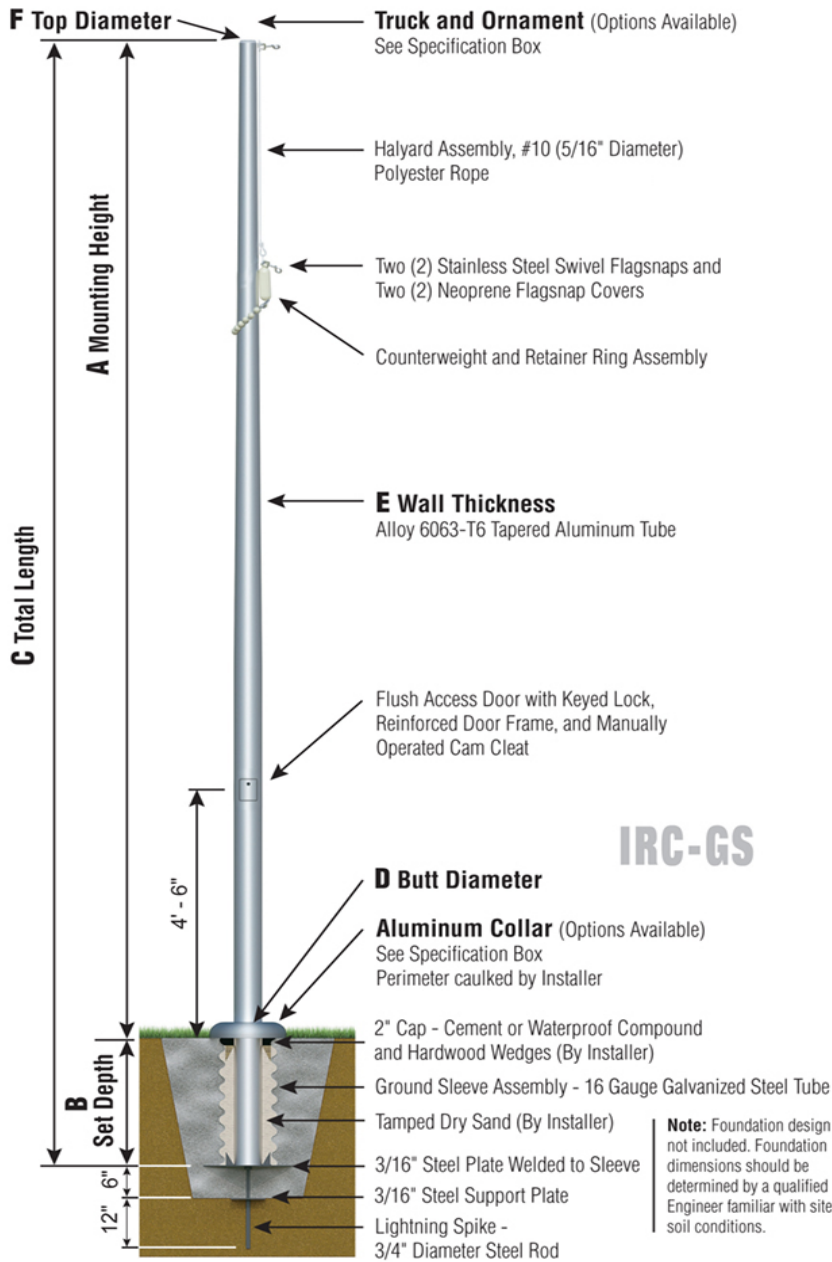




## Sentry II Series

IRC - Internal Cam Cleat  
Rope Halyard  
Ground Set Installation



# IRC20C61 - SAT



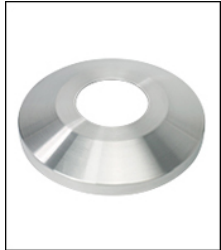
**TRK-9660**

Int. Revolving Truck  
Sealed Bearings



**BAL-0612-GLD-ES**

HD Gold Anodized  
Aluminum Ball



**COL1-A06S**  
FC-11 Spun Alum  
1-Piece



**SAT**  
Satin Finish



**IRC - CAM CLEAT**  
Reinforced Welded  
Door Frame

Specifications	
A. Mounting Height:	20'
B. Set Depth:	2'-0"
C. Total Length:	22'-0"
D. Butt Diameter:	6"
E. Wall Thickness:	.156"
F. Top Diameter:	3.5"
Flagpole Sections:	1
Shaft Weight:	104 lbs.
Hardware Weight:	17 lbs.
Ground Sleeve Weight:	28 lbs.
* Max Flag Size:	4' x 6'
* Max Wind Speed w/Nylon Flag:	208 mph
* Max Wind Speed No Flag:	301 mph
* Wind Speed Specifications from ANSI/NAAMM FP 1001-07	

Customer Name:	
Dealer:	Qty: 1
Project:	Location:
Notes:	

IRC20C61G-T0Y-O2N-C0W-FSA